

Linoleum Block Impressed Clay

Combining
Printmaking Techniques
with Ceramics

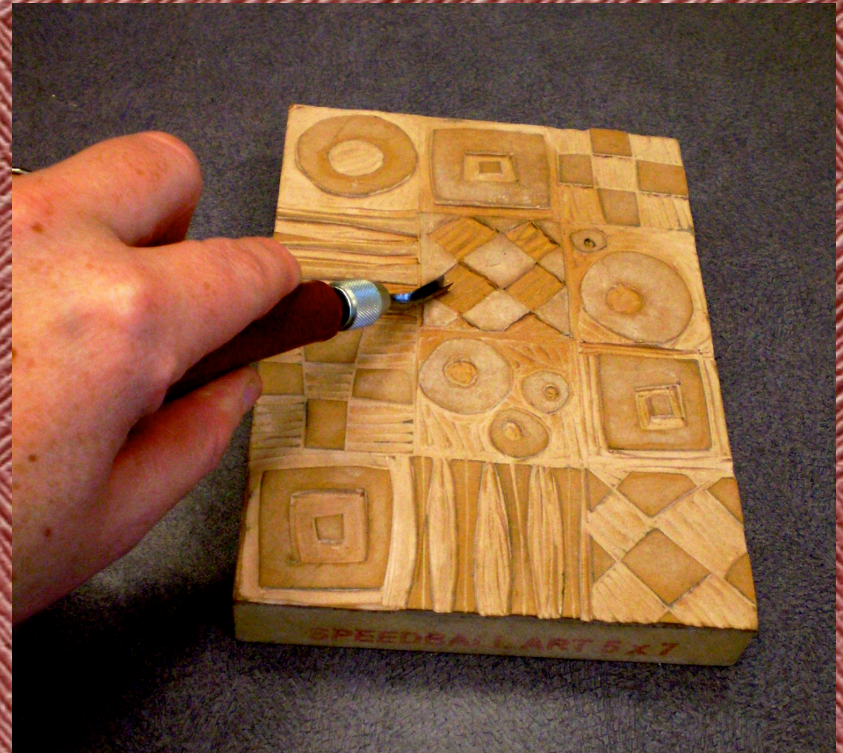
Linoleum Blocks

- ✦ Normally used to create block prints
- ✦ (similar to wood-cut prints)



Carving the Block

- ✦ Designs are drawn or transferred on the lino block
- ✦ Special Linoleum cutting and carving tools must be used



Carving the Block

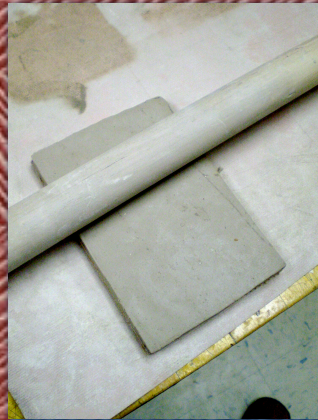


Impressing the Clay

- ✦ Roll out your clay into a slab
- ✦ Smooth out any marks on the surface of the slab
- ✦ Place clay over the carved lino block
- ✦ Use a roller or sandbag to press the clay into the carved texture

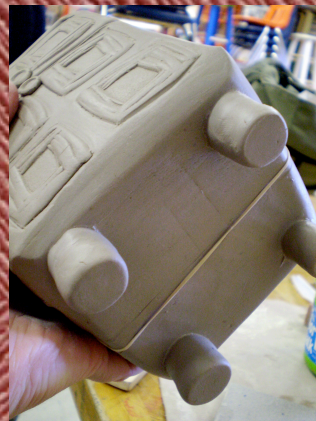
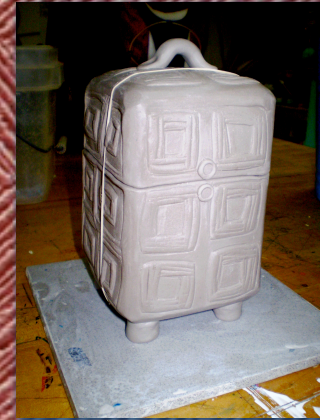
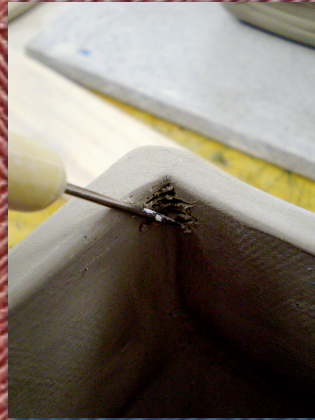
Making a Box

The Process



- Roll out four (4) slabs of clay that is at least 4 x 6 inches
- Cut two 4.5 x 4.5 inch squares for the top and bottom
- Score the sides of each slab

The Process



- Cut the lid, add tabs to the lid to hold it in place
- Optional - Add a handle for the lid and feet on the bottom

Examples



Examples



Examples



Project Grading Criteria

The students will be assessed using a grading rubric with four criteria:

- ✿ 1. Participation and Following Directions
- ✿ 2. Craftsmanship
- ✿ 3. Design
- ✿ 4. Glazing